

RECEIVED
LARAMIE COUNTY
CHEYENNE, WY.

'89 SEP 25 PM 1 59

CERTIFIED LAND CORNER RECORDATION

DESCRIPTION OF CORNER EVIDENCE FOUND, AND ORIGINAL RECORD (If known)

S.1/16
S.15 S.14
T.14N., R.70W.
6th P.M.

Found standard G.L.O. brass cap projecting 10" above ground mound of stone on West side.

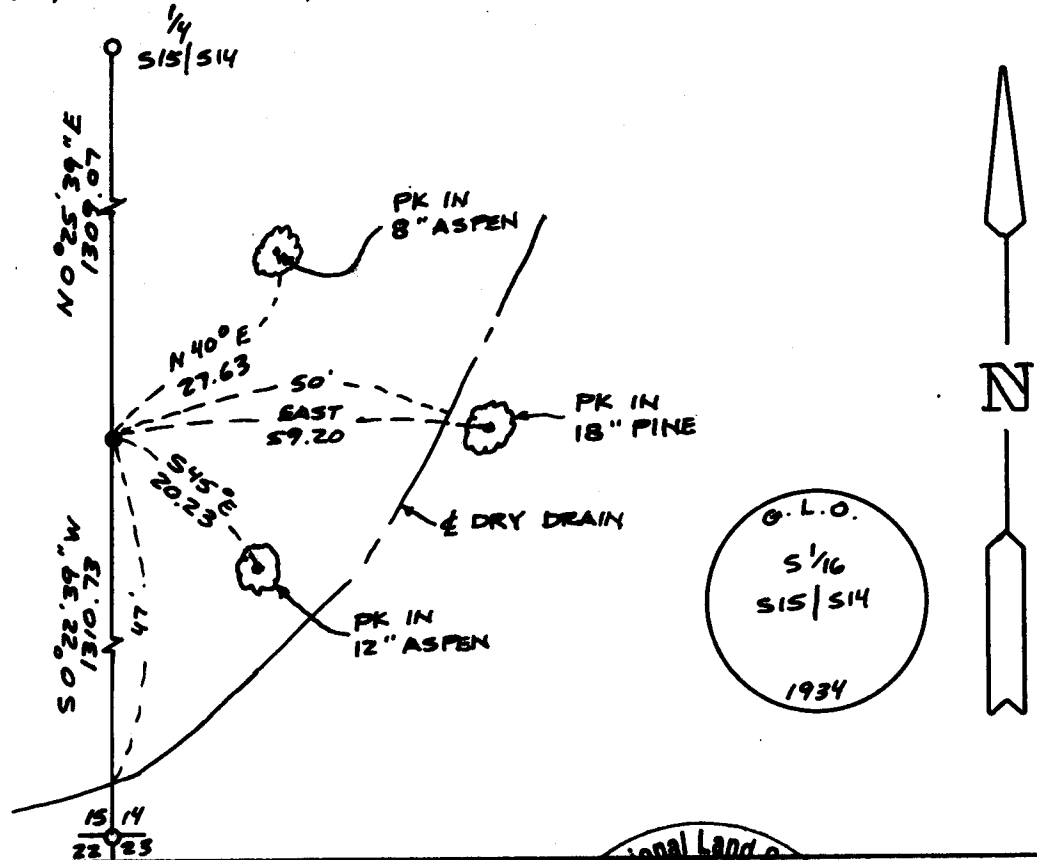
G.L.O. Record: Set 1" diameter x 3' long iron post 27" in ground with brass cap marked as shown below with mound of stone.

DESCRIPTION OF MONUMENT AND ACCESSORIES ESTABLISHED TO PERPETUATE THE ORIGINAL LOCATION OF THIS CORNER:

At the corner: Not remonumented.

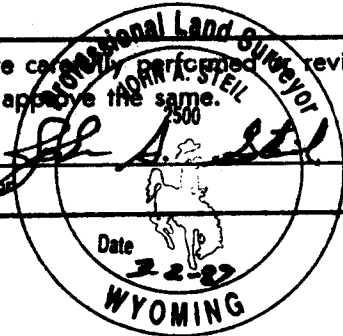
Accessories : See ties below.

SKETCH, WITH COURSE AND DISTANCE TO ADJACENT CORNER IF DETERMINED IN THIS SURVEY. (May Sketch or Paste Reproduction on Reverse Side.)



I, John A. Steil certify that I have carefully performed and reviewed the work done on the diagrammed corner as reported on this recordation form and approve the same.

Signature of Surveyor: John A. Steil L.S. 2500
Registration No.



STATE OF WYOMING,
Office of Clerk and Recorder,
County of _____

This "corner record" was filed for record on the _____ day of _____, 19____, was noted on the cross-index plat and is assigned page No. _____, in book No. _____.

Cross Index No.	County Official			Mer.
	M-17	T. 14N	R. 70W	
_____	_____	_____	_____	6th Mer.
_____	_____	_____	_____	Mer.
_____	_____	_____	_____	Mer.
_____	_____	_____	_____	Mer.
_____	_____	_____	_____	Mer.
_____	_____	_____	_____	Mer.
_____	_____	_____	_____	Mer.